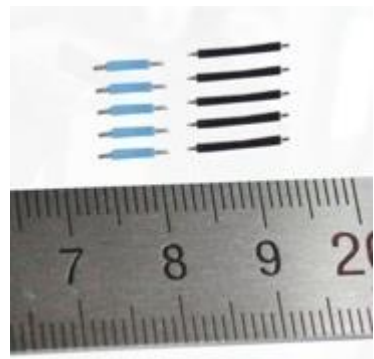
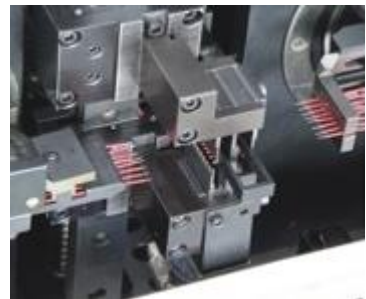
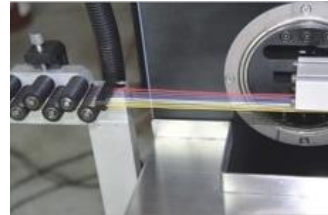


YHPCConnect

AUTOMATIC HIGH PRODUCTION 2 ENDS TIN M/C YHPC-SK-A19



Features

- 1) Develop own Patent Right technology for function controlling: cut length, strip length, twist strength and length, tining length.
- 2) Use Japanese, Panasonic servo motors for High Speed, Accuracy and Reliability.
- 3) Use microprocessor control capable to do self check test, low pressure test, servo motor and belting abnormality. Any defect will stop and give error message on defect location.
- 4) PVC waste is sucked into a waste collection bag.
- 5) Set-up is design for simplicity so easy that set-up time is done very fast thus saving time.

YHPC CONNECT | BLK. 478C ,YISHUN STREET 44, #09-161 SINGAPORE 763478 |

H/P:+65-91293768 | E-MAIL: pcleee@singnet.com.sg / yhpc99@gmail.com

WEBSITE:www.technocore.com.sg | CONTACT PERSON – LEE PENG CHAI |

AUTOMATIC HIGH PRODUCTION 2 ENDS TIN M/C YHPC-SK-A19

TECHNICAL DATA

Model	YHPC-SK-A19
Function	Cut to length, Single End Strip, Both End Strip, Single End Half Strip, Both End Half Strip, Single End Twist, Both End Twist, Single End Tinning and Both End Tinning.
Capacity	12000 pcs / hr (For awg 32 ~ 28, 100 length)
Wire Size	Awg 32 ~ 20 / 0.032 ~ 0.616mm ²
Wire Guide Pipe	Ø1.0, 1.5 , 2.0 , 2.5 & 3.0
Wire Cut length	10 ~ 350 mm (Shortest cut length will depend on strip length)
Wire Cut Length Tolerance	1.0 mm + (Cut Length X 0.1%) below
Strip Length	0.0 ~ 5.0 mm
Twist Length	3.0 ~ 6.0 mm
Tinning Length	0.5~ 6.0 mm
Detector	Pressure down, Wire load & No Wire, Servo Motor Overload.
Air Pressure	5 ~ 6 kgf/cm ² , Use Dry Air
Power Source	200/220V(within±10%) 50/60 Hz , 10 A, Single Phase Can make 110V upon request.
Dimension/Mass	105L x 61W x 1120H (cm) / 250 Kgs
Packing Dimension	x x (cm) / Kgs
Packing Include	(3 sets of cut & strip blades) + (1 sets of wire guide pipes, Ø1.0,1.5,2.0,2.5 & 3.0)
Country Of Origin	CHINA